

INTRODUCING THE NEW INTERNATIONAL RH SERIES





RH

INTERNATIONAL

Introducing the International RH Series

The most agile regional haul truck to hit the streets.

Product overview

1. Uptime
2. Maneuverability / Visibility
3. DriverFirst
4. Fuel economy
5. Weight



RH Series positioning

Designed for regional haul and delivery applications with excellent visibility and maneuverability and a focus on uptime.

1. BUILT FOR MAXIMUM UPTIME

Maximizing uptime to keep drivers where they want to be
– on the road

2. GREAT VISIBILITY AND MANUEVERABILITY

With impressive front and side visibility paired with a tight turning radius, the RH Series is perfect for negotiating city streets, alleys and loading docks.

3. BEST-IN-CLASS DRIVER FEATURES

Providing the right features to ensure drivers are as comfortable and safe as possible

UP TO 6% BETTER FUEL ECONOMY

The A26 engine offers up to a 5% improvement in fuel economy. Combined with aerodynamic and drivetrain improvements the RH Series offers up to 6% overall improvement.

THE LIGHTEST CLASS 8 TRUCK IN OUR LINEUP

Allowing you to haul more payload and increase revenue.

Nomenclature

RH Series

RH613

Set back axle

113" BBC

RH Series is available in a range of configurations, so you can spec an ideal match for your specific business needs.



56" Hi-Rise Sleeper

56" Hi-Rise Sleeper with Roof Fairing

Day Cab with Roof Fairing

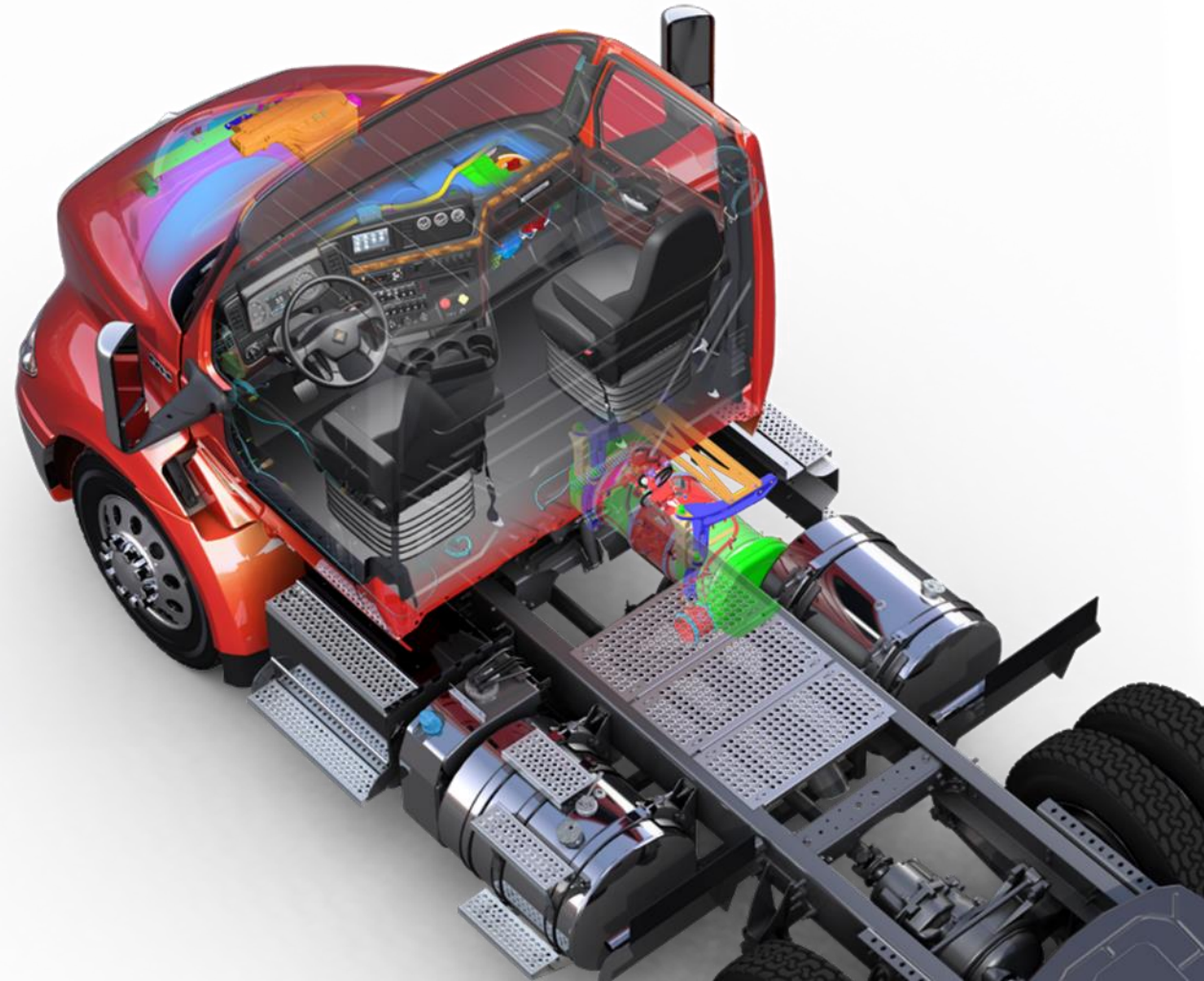
Day Cab

56" Low Roof Sleeper



UPTIME

Keeping you on the road to profitability.



UPTIME

Keeping you on the road to profitability.

Easy access fuse panel with gutter around the panel protects electronics from spilled liquids

All-new BIC HVAC system

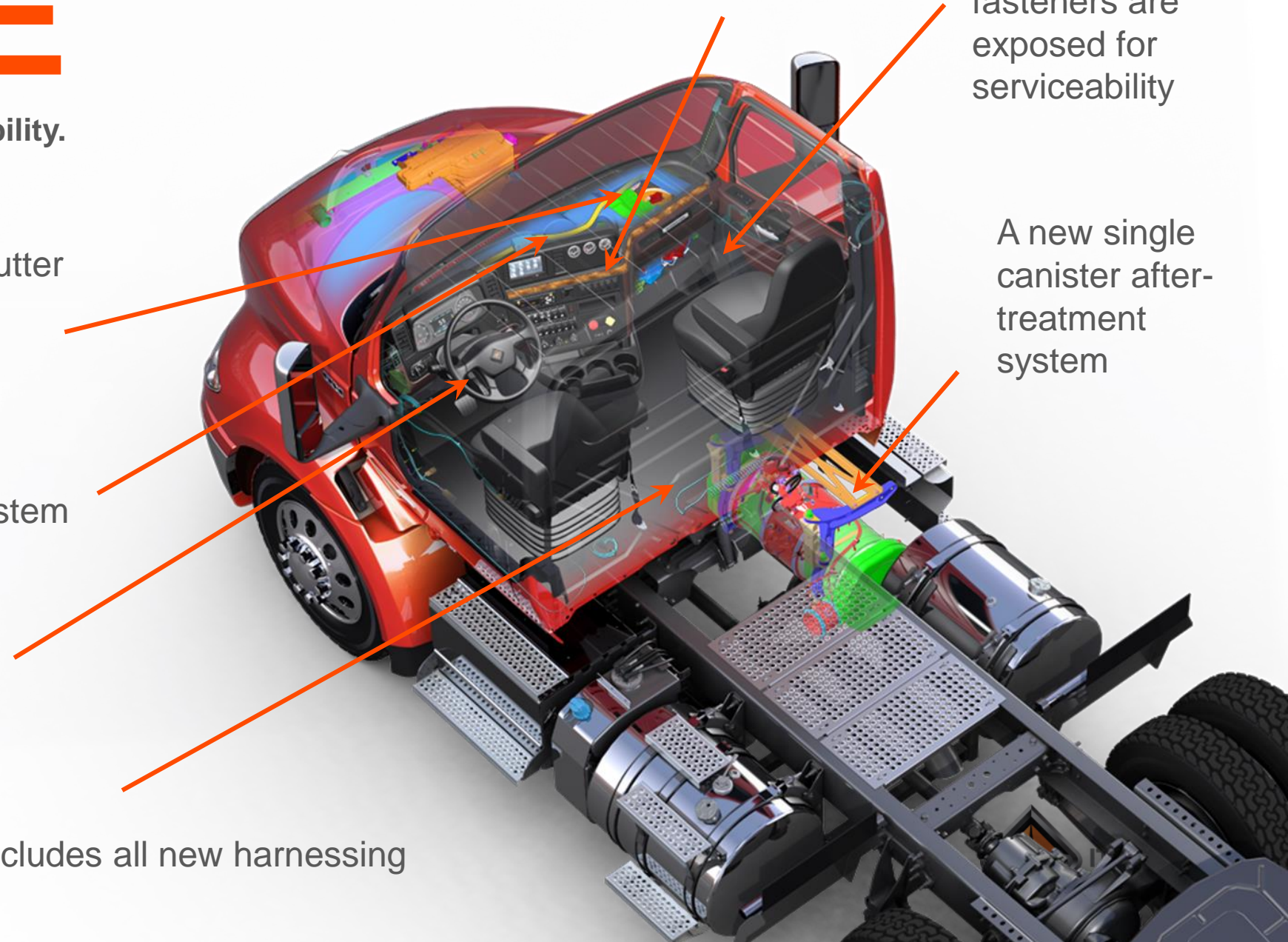
Laser etched text on steering wheel controls

Cab wiring includes all new harnessing

Driver controls and instrumentation

Key interior fasteners are exposed for serviceability

A new single canister after-treatment system



UPTIME

Keeping you on the road to profitability.



The hood opens wide for easy serviceability.

Just three bolts to replace new pedestal mirrors

The easily removable 3-piece bumper

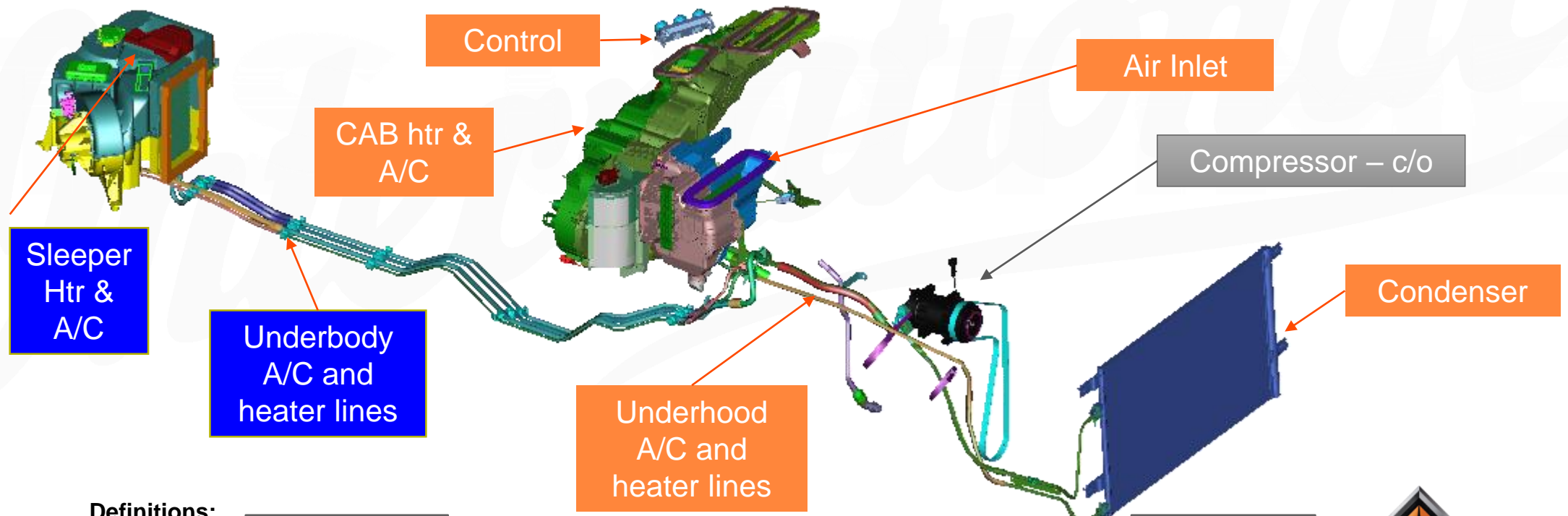
Standard LED headlamps last longer



HVAC system

Ground up design of entire system, except for the compressor

- Improved performance and Uptime, in both durability and serviceability



Definitions:

TXV Change to Face Seal

Carry-Over

Imported - Relocated

Modified

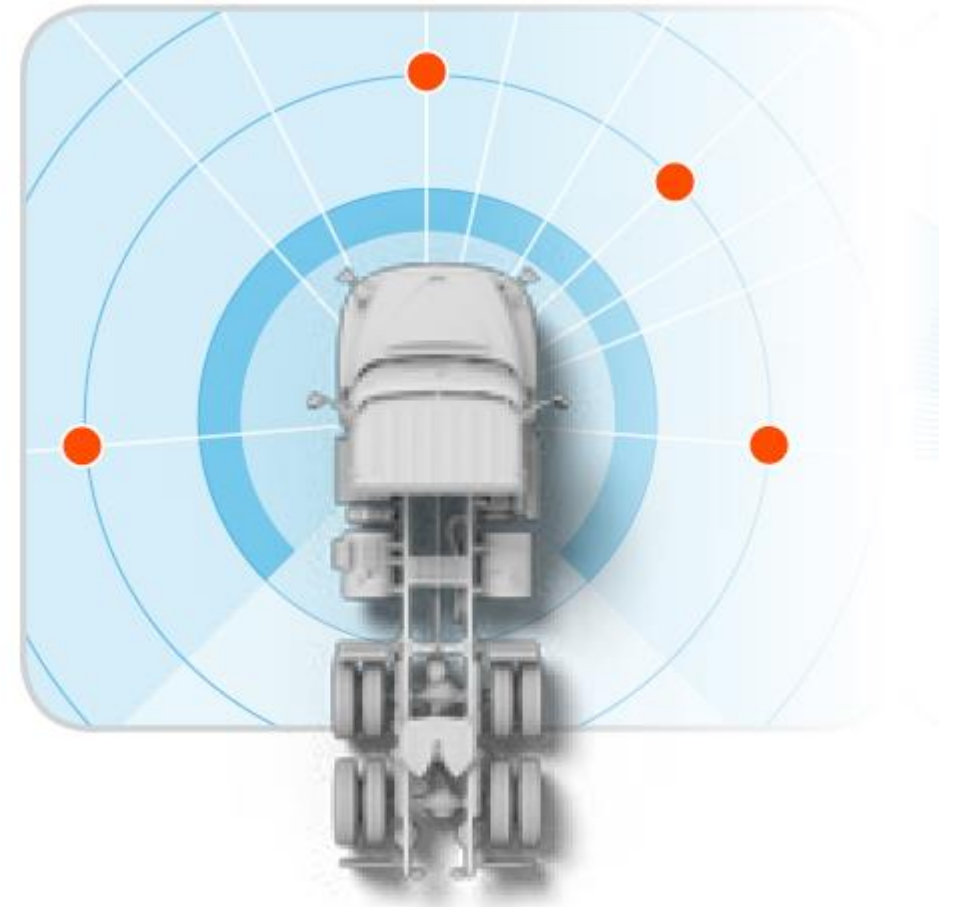
New

Deleted

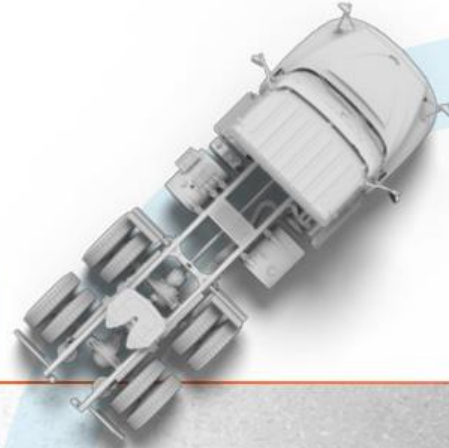


MANUEVERABILITY / VISIBILITY

A visible difference in safety and productivity.



Tight turning radius



TURNING RADIUS

Configuration (152" Cab to Axle for all)	Curb-to-Curb Turning Radius	Wall-to-Wall Turning Radius
RH Series113" BBC, 50" Bumper to Axle	27' 10"	30' 8"

50°
Inside Cut
27' 10"
Curb to Curb

OUTSTANDING MANEUVERABILITY

You need optimal maneuverability to navigate through crowded city streets or cramped loading docks. The RH Series is engineered to provide an inside wheel cut of up to 50° which delivers a curb-to-curb turning radius of only 27' 10", saving driver time and boosting productivity.*



*With a 152" cab to axle (wheelbase is 215")

Great visibility



**A VISIBLE DIFFERENCE IN
SAFETY AND PRODUCTIVITY.**

Forward visibility is among the best at as little as 21'. This means objects are more visible to the driver, improving safety.

DRIVER FIRST

Every detail inside the RH Series cab has been carefully designed, measured and clinic-tested to optimally benefit the driver.



Driver clinics

To gauge drivers' overall appeal and preferences for design characteristics of our new interior concept. The research is designed to test for form, function, feature feel, layout and overall craftsmanship

- Interior design / layout
- Space
- Ergonomics
- Storage
- Color and trim
- Cluster / instrument panel
- Etc.



Premium gauge cluster



Premium cluster

- Main menu

- Activated by left or right switches on pagination control module

- Dedicated area for gear selection



- Favorite Screen 1 MPH/KPH

- Active fault codes displayed here

- Yellow faults can be turned off

- Dedicated area for Eaton / Allison transmission

- Dedicated area for total odometer

- Dedicated area for cruise control and adaptive cruise control

New column mounted shifter



The innovative new shifter is mounted on the steering column, allowing you to easily reach and smoothly operate shifting and engine braking while keeping your eyes on the road and your hands on the wheel.

Steering wheel

Steering wheel can be selected independent of trim level

- Standard
 - 4 spoke, 18", black - 0005CAW
- Optional
 - 4 spoke, 18", black, leather wrapped, includes colored Diamond logo - 0005CBE



Classic interior trim level



Trim level content

- Black gauge bezels
- Dark neutral substrate

Ala carte options shown

- Base cluster
- Radio
- MUX switches (6 of 26)
- Trailer brake
- Steering wheel buttons
- Standard steering wheel
- Manual windows and door locks

Trim level content - doors

- "Dark Neutral" substrate, insert
- "Graphite" map pocket
- "Black" handles and bezel

Diamond interior trim level



Trim level content

- Amber burl trim on dash
- Bright gauge bezels
- Different materials, shade of gray dash

Ala carte options shown

- Premium cluster
- Radio
- Hard gauges (3 of 6)
- MUX switches (12 of 26)
- Trailer brake
- Steering wheel buttons
- Leather wrapped wheel

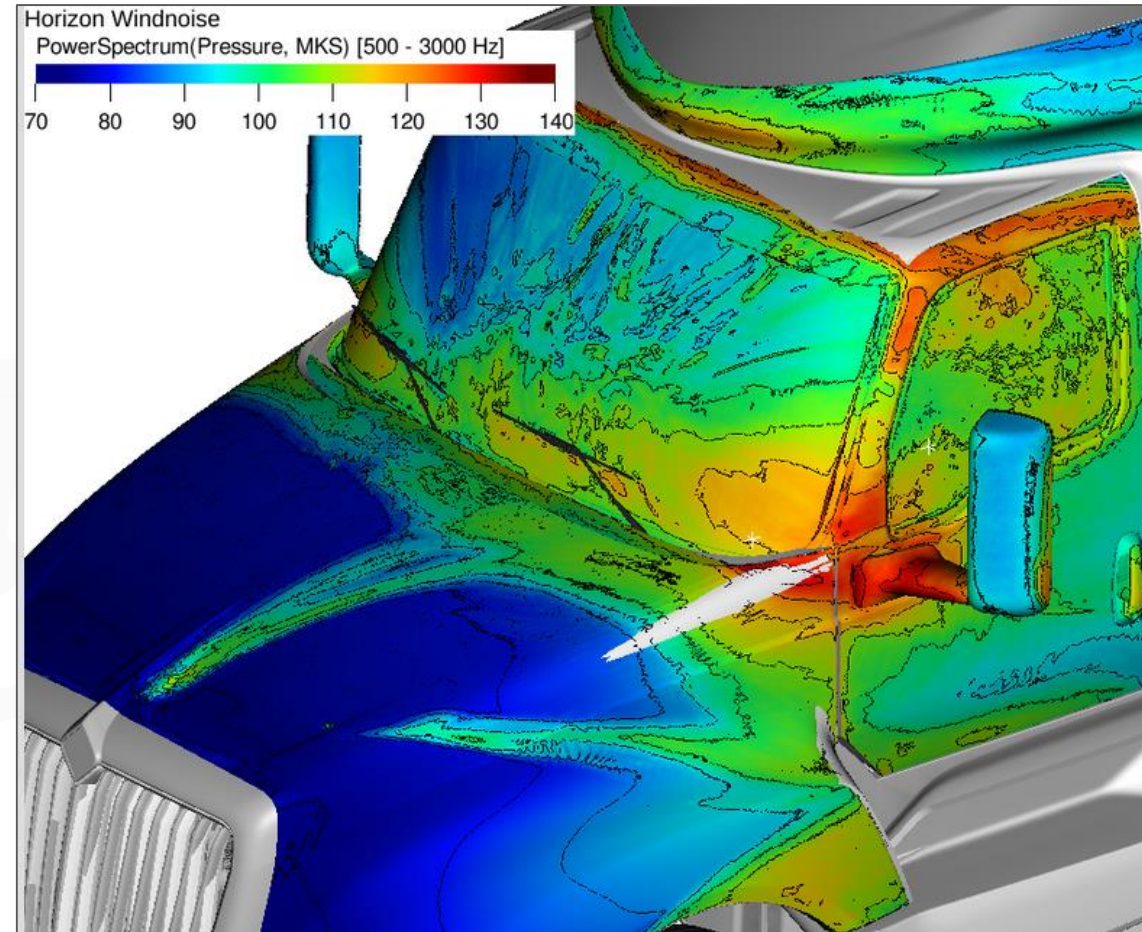


Trim level content - doors

- "Graphite" vinyl wrapped insert
- "Chrome" release handle
- Power windows and locks

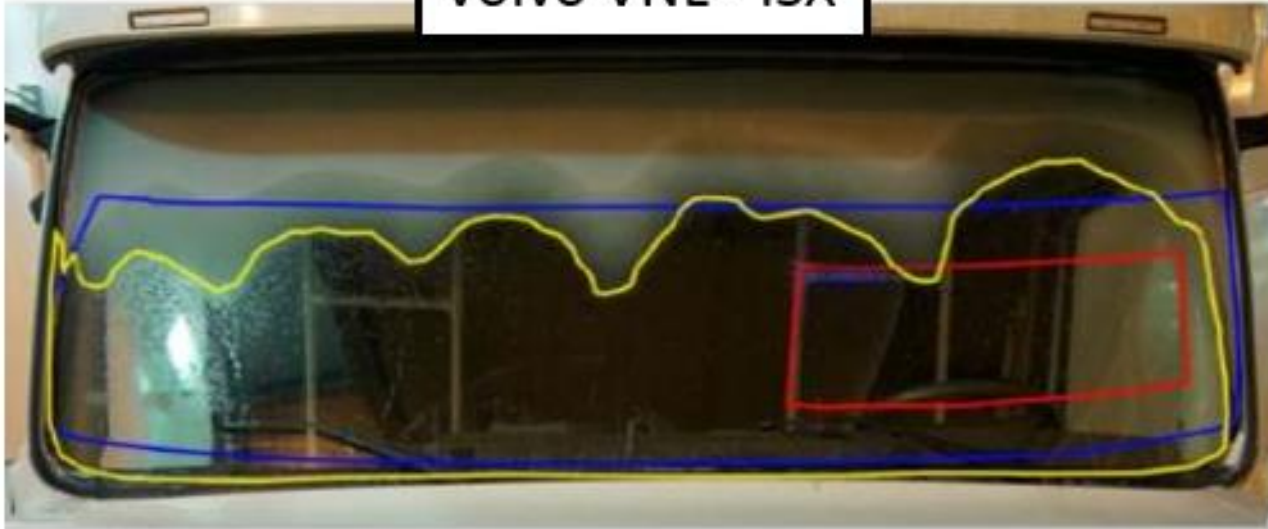
Reducing interior noise

- RH is a quieter cabin
 - Improved Wind Noise
 - Improved Door Sealing
 - Insulated flooring
- The new RH design resulted in a 4 sones wind noise reduction over ProStar
- Critical components affecting wind noise were optimized
 - Side glass (vent window eliminated)
 - Door seal
 - Pedestal mirrors

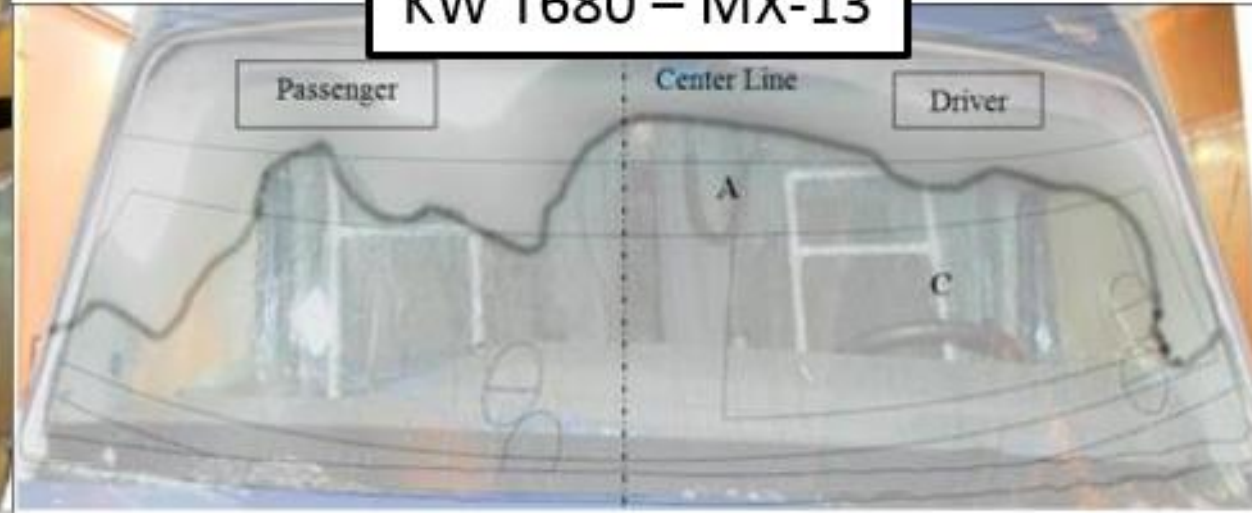


ProStar competitive defrost performance (after 30 Minutes)

Volvo VNL - ISX



KW T680 - MX-13



FL Cascadia - ISX



ProStar - N13



RH defrost performance

- Windshield
- RH Best In Class defrost performance
- Featuring “max defrost” button



ProStar

88 l/s Total Defrost Airflow

	Results	Target
Zone A:	28%	85%
Zone C:	38%	99%



RH

108 l/s Total Defrost Airflow

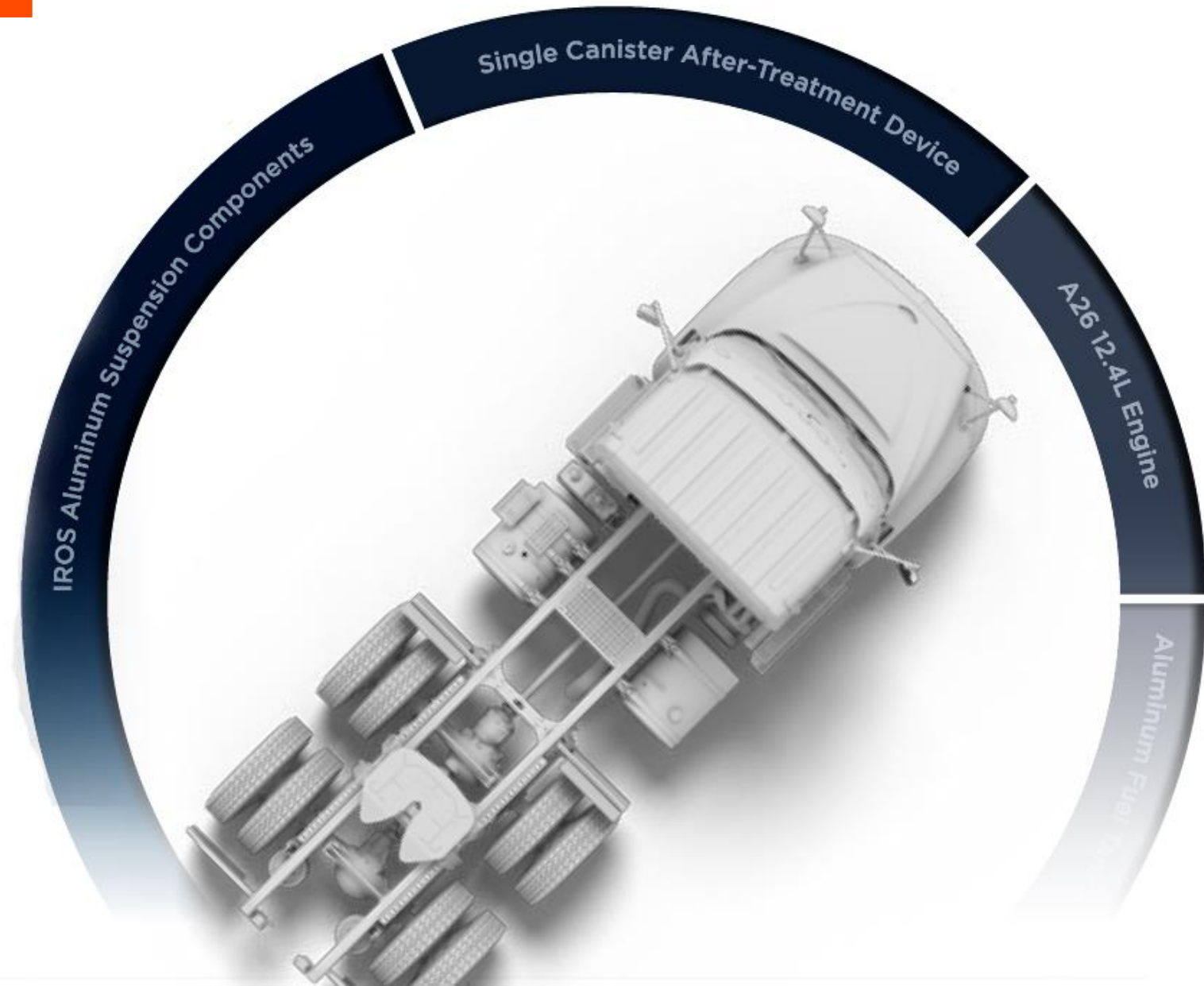
	Results	Target
Zone A:	100%	85%
Zone C:	100%	99%

Unparalleled driver appeal: summary

- ✓ Redesigned one-piece side window affords the driver a clearer line of sight.
- ✓ A more powerful HVAC system delivers better defrosting and demisting.
- ✓ An all new interior offers an improved ergonomic design, including better elbow room, hip room and leg room.
- ✓ The all-new premium gauge cluster offers monitoring of real-time fuel economy and provides other important alerts in clear sight.
- ✓ Switches are grouped by frequency of use to make them more intuitive to find.
- ✓ New displays assure every instrument is readable in any type of lighting.
- ✓ Horn cord was relocated back to its traditional, intuitive position.
- ✓ Entry and exit of the cab is easier than ever.

WEIGHT

The RH Series is engineered to shed pounds wherever possible, employing advanced materials and innovative techniques that add up to greater efficiency and bottom-line profitability.



Weight reduction

SHEDDING POUNDS TO BOOST PRODUCTIVITY.

Here are just some of ways that the RH Series is engineered to significantly reduce weight and improve efficiency without compromising strength and durability.

Single Canister After-Treatment Device

The new, single canister design is smaller, simpler, lighter and easier to service than the twin-canister design used in the 2018 ProStar 113

-105 lbs

International Ride Optimized Suspension (IROS)

The smooth ride on the RH Series also reduces weight over the previous generation ProStar thanks to increased use of strong, lightweight aluminum suspension components

-128 lbs

A26 Engine

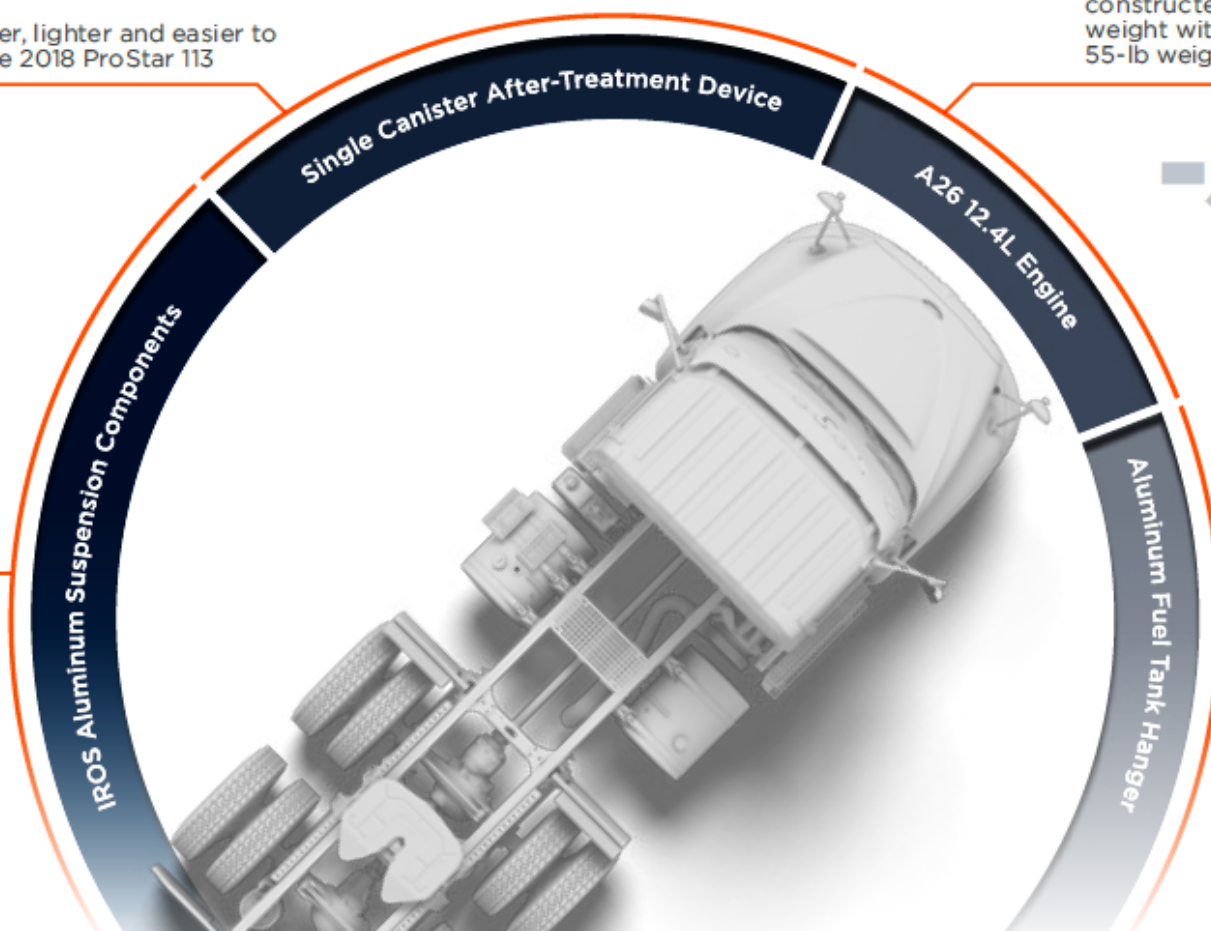
The CGI crankcase and other key components are constructed of advanced lightweight materials to reduce weight without compromising durability, resulting in a 55-lb weight savings over the previous N13 engine

-55 lbs

Aluminum Fuel Tank Hangers

Lightweight aluminum is used for the mounting hardware on the fuel tank to shed unwanted weight from the previous ProStar design

-53 lbs

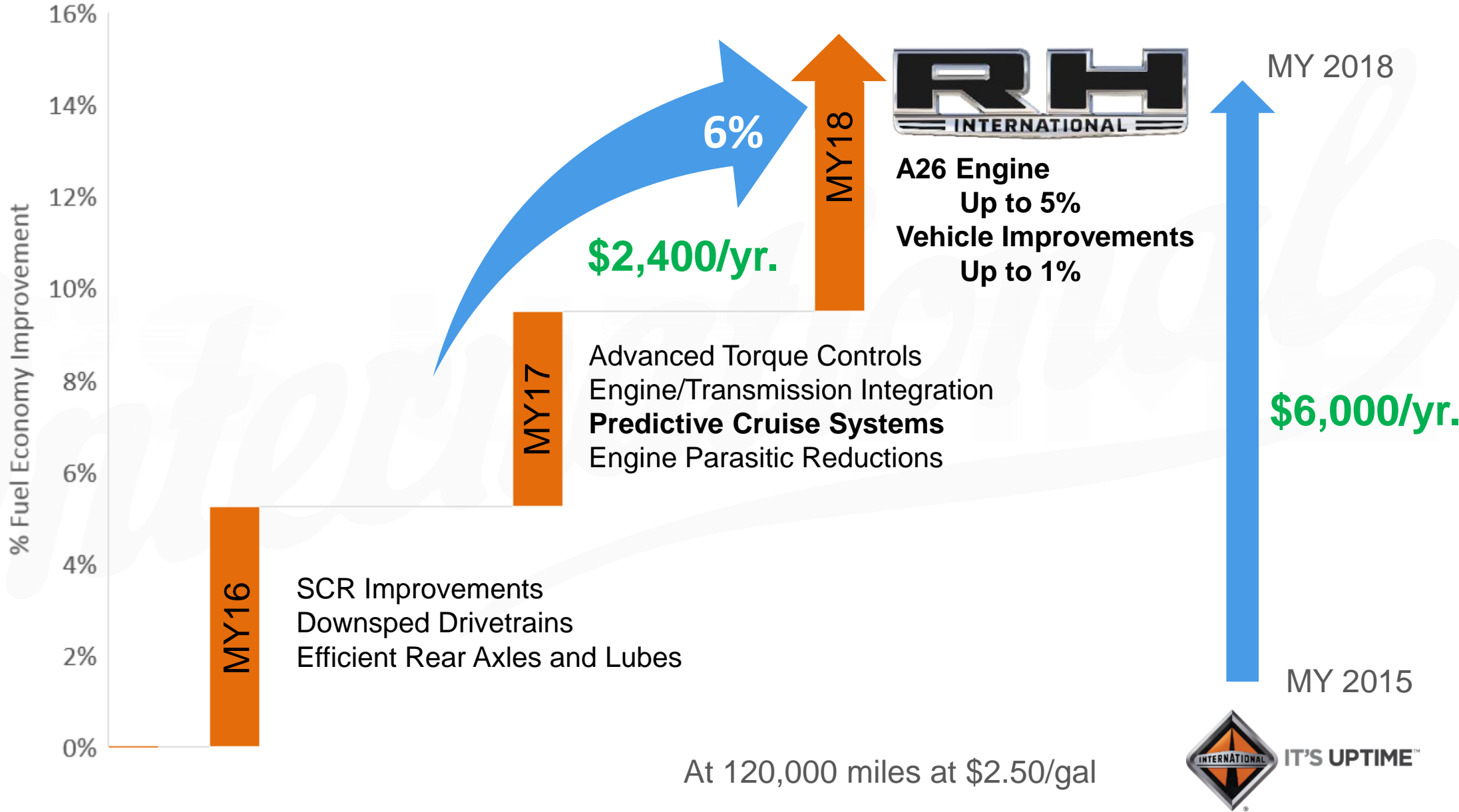


FUEL ECONOMY

The RH Series is up to 6% more fuel-efficient compared to the previous generation ProStar 113 with an N13 engine.



The A26 is accelerating fuel economy's climb

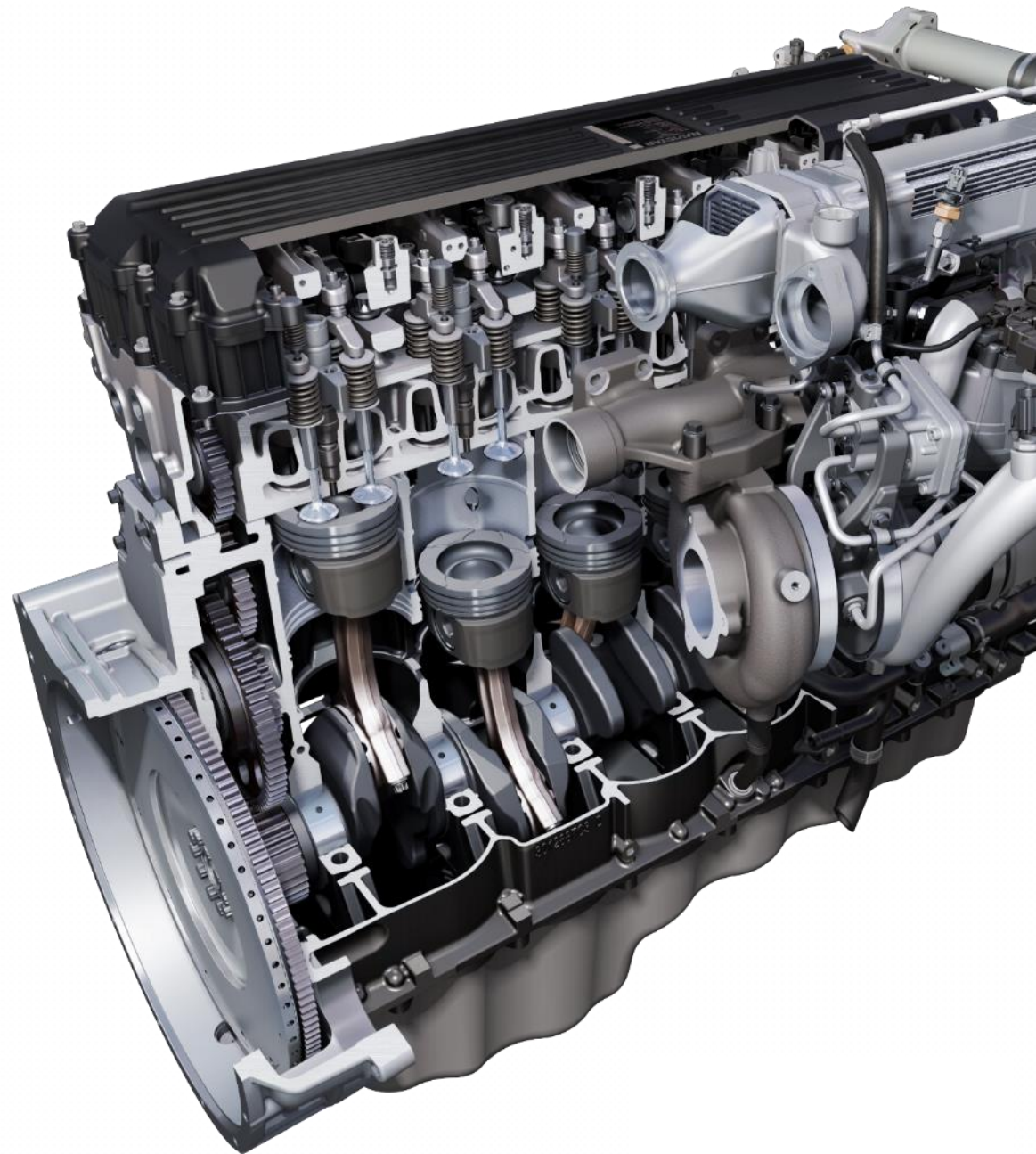


ENGINE

The A26 was built with Uptime in its DNA and is packed with lightweight, hardworking performance for regional haul applications.

A26

RIH
INTERNATIONAL



The International A26 engine

UPTIME

We are standing behind it with the **best engine warranty in the industry - two years and unlimited miles.**

FUEL EFFICIENCY

The A26 is up to 5% more fuel efficient. This is the most efficient engine offered in our on-highway product lineup (LT Series).

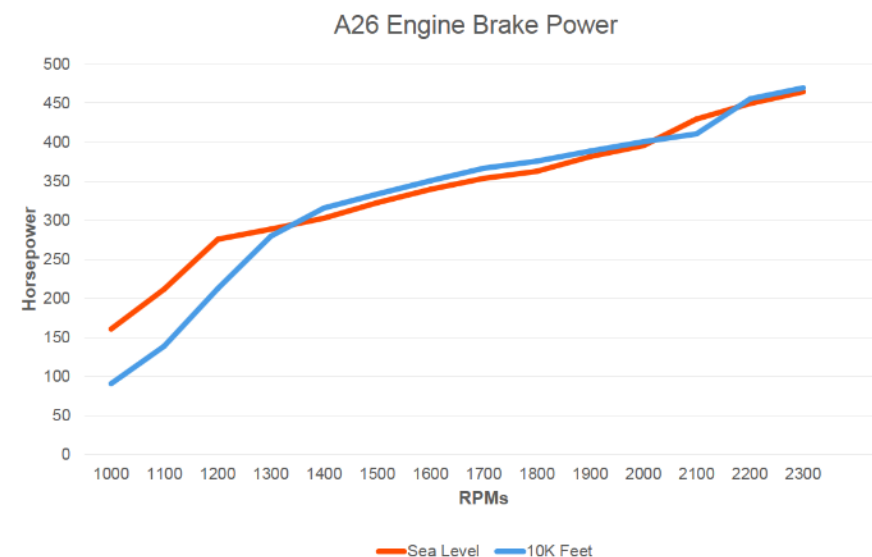
WEIGHT

At 2,299 lbs. the A26 is the lightest engine in its class and enables an impressive 200 lbs. of additional weight reduction in vehicle mounted components.

NOISE

The A26 is our quietest engine, so you can have a clear conversation outside the truck when it's running and so you can enjoy the quiet ride on the road.

Engine braking power is **increased by up to 67%** for confident braking performance, particularly at low- to mid-RPMs and at higher altitudes.



Longer service intervals

Service interval by mpg	> 6.5 mpg	5.5 to 6.5 mpg	< 5.5 mpg
Oil and oil filter	50,000 miles or Up to 70,000 miles (with oil sampling and International Truck approval)	30,000 miles	20,000 miles, 400 hours, 6 months
DPF cleaning	600,000 miles, 11,000 hours	500,000 miles, 9,000 hours	350,000 miles, 9,000 hours

- Fuel filter: every oil change or 1,300 hours
- Coolant filter (optional): every fourth oil change or 12 months*
- Valve lash: at 120,000 miles, at 300,000 miles, then every 300,000 miles
- DEF filter: every 300,000 miles

*Coolant filter recommended for applications with in-transit heat.



THANK YOU

